



# HP ErgoSoft RIP Color Edition

Installation Guide



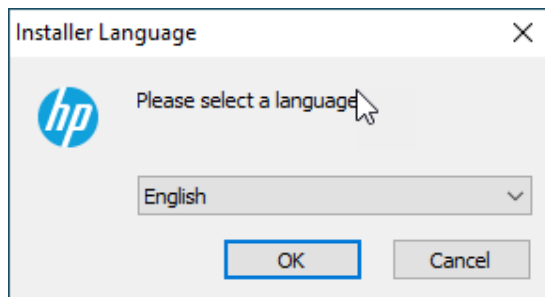
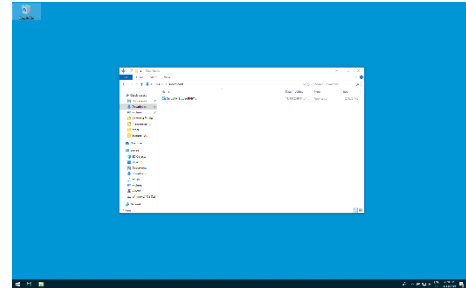
# HP ErgoSoft RIP Color Edition Installation

## Installation Procedure

To begin with the Installation, navigate to the folder you downloaded the HP ErgoSoft RIP Color Edition to. Many browsers will default to downloading files to «Downloads» under Windows, but it might be somewhere else if you chose a custom save location.

Double-click on the setup file and wait for the installer to prepare the installation.

On modern Windows systems, you might need to confirm a firewall message to allow access for the installer.

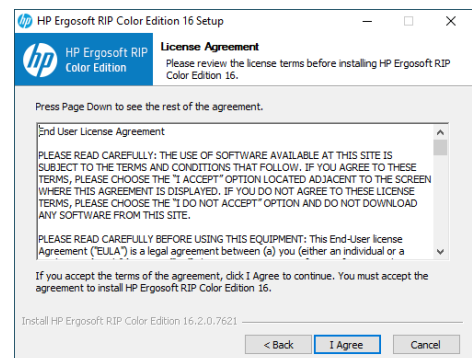
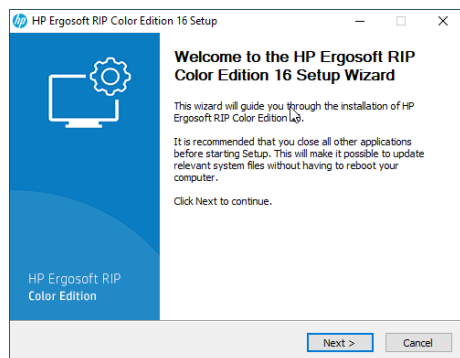


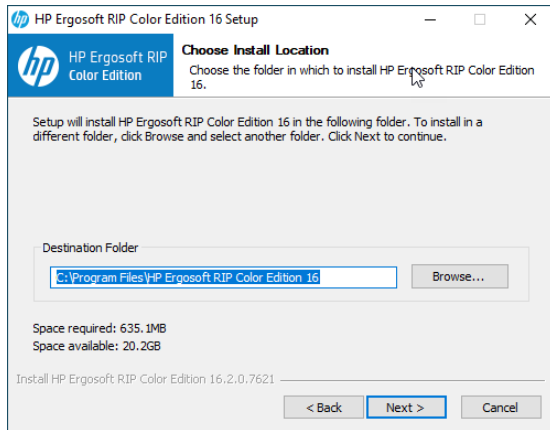
Select the user interface language for the software. The installation and user interface of the RIP will then be displayed in this language.

This setting can easily be changed after the installation should you wish to use the software in a different language later on.

After a moment, the welcome screen will appear. Simply click next to proceed with the installation.

Read and confirm the Software License Agreement using the *I Agree* button. If you do not wish to accept the software license agreement, click *Cancel* to quit the installation.



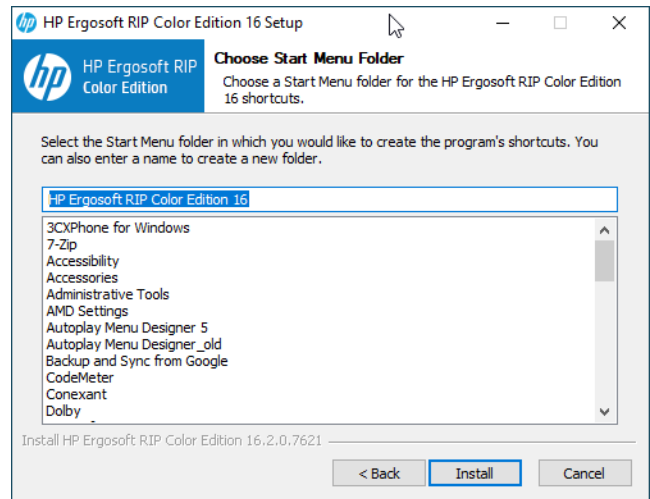


Select the installation directory for the main HP ErgoSoft RIP Color Edition program. This is where the software itself will be installed to.

By default the suggested path will be in the Windows program directory but you may install the program to a custom location. To do so, click *Browse* and select the folder you wish to install the software to.

Select the *Start Menu Folder*, this is the folder the RIP will appear in when you access the Windows *Start* button.

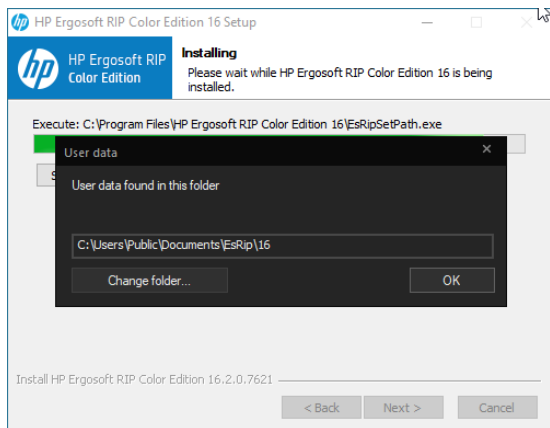
When you are satisfied with your choice, click *Install* and wait for the installer to finish copying files.



Towards the end of the installation, a prompt will appear, asking you to select a *User Data* folder. This is the folder where your user specific data such as software configuration, profiles, etc. will be stored.

Generally we recommend using the default path to ensure Windows gives the program full access to the folder, but you may of course select a custom path by clicking the *Change Folder...* button.

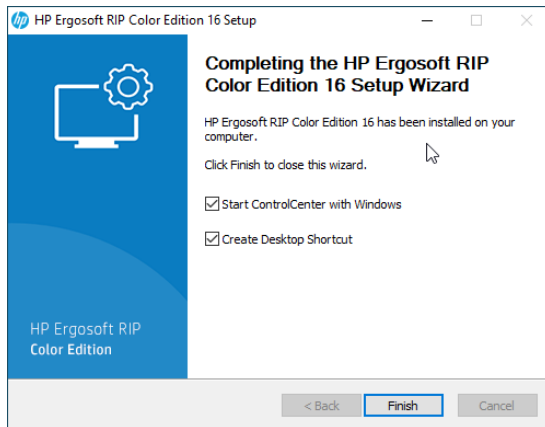
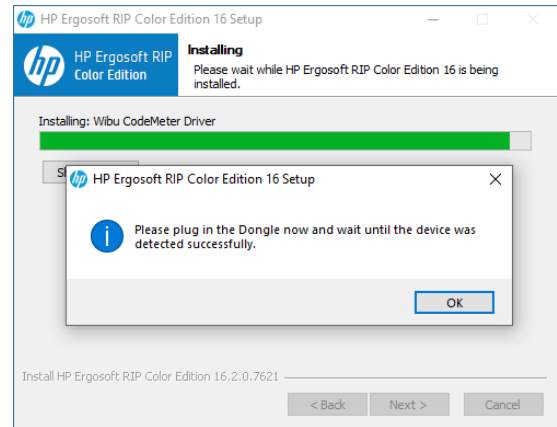
When you are satisfied, confirm with *Ok* to continue.





After a moment, another prompt will appear asking to plug in the dongle.

Make sure the silver USB Dongle you received with your HP ErgoSoft RIP Color Edition is currently plugged into the system, then confirm with *Ok*.



Wait for the file copy process to finish, then press *Next*. Another dialog will appear with a checkbox that lets you set if a shortcut to the HP ErgoSoft RIP Color Edition should be created.

Click *Finish* to complete the installation.

Congratulations! You have successfully installed the HP ErgoSoft RIP Color Edition!

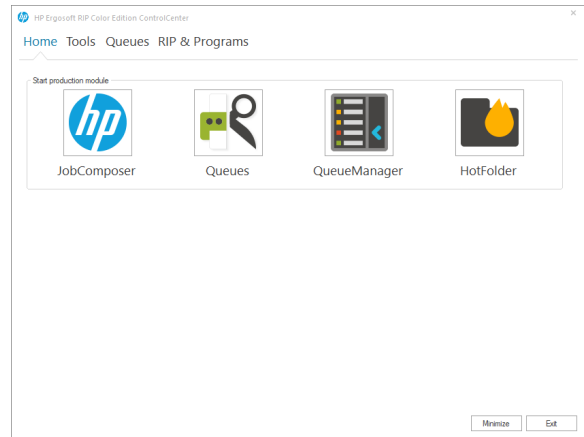


## Starting HP Ergosoft RIP Color Edition 16 using the Control Center

When first starting HP Ergosoft RIP Color Edition 16 it is recommended to start it through the Control Center as this will also start and configure the necessary utilities. Go to *Start > Programs > Ergosoft 16* and select *Control Center*. The Control Center Utility will launch and also start the necessary background processes.

The ErgoSoft RIP Control Center acts as a central hub for all RIP program modules. It lets you launch individual applications such as the JobComposer, PrintQueues, QueueManager and HotFolder, Tools like the Maintenance Tool, User Rights Control, etc. as well as manage PrintQueues, configure RIP-Engines, and automatic program launch on system start.

In the Home tab, click the *JobComposer* icon to start.



## Initial Configuration

When first starting the HP ErgoSoft RIP Color Edition, you will be prompted to do some initial configurations.

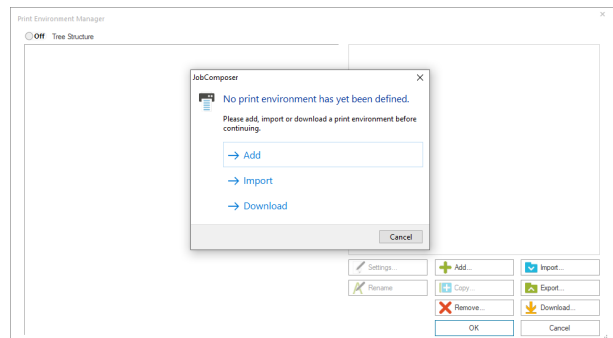
Start the software by double-clicking the Desktop Shortcut. After a moment, the Print Environment dialog will appear with a prompt stating that «No Print Environment has been defined».

You have 3 options to add a new Print Environment:

**Add:** Lets you select your printer model and create a new, empty Print Environment without density linearisation or profile.

**Import:** Lets you import an existing Print Environment from a .PrEnv or PrEnvPck file.

**Download:** Connects to the HP ErgoSoft RIP Servers and allows you to download from a selection of pre-configured Print Environments containing Density Linearization and Profile.





## Configuring a Print Environment with *Add*

If you selected *Add*, the software will automatically start the Print Environment Configuration Wizard for you. The first window will ask you if you want to create a new PrintQueue or use an existing one. Since we assume this is a new installation, we will go with *Add Queue* to define a new one.

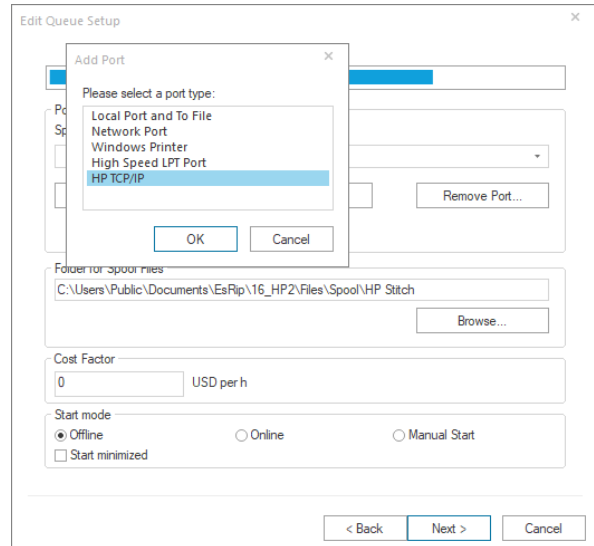
From the list, select the printer model that corresponds to your printer. For this guide we will cover the setup for the HP Stitch S300 / S500.

Click on the folder for HP Stitch, select your model, then click *Next* to get to the Port Configuration window.

If no Port has been set up yet, you will immediately see the Port type selection pop up.

For the S300/S500, select the port type HP TCP/IP and confirm with *Ok* to continue with the port configuration.

(If you already have a port set up, you can click *Add Port* bring up the Port Selection.)



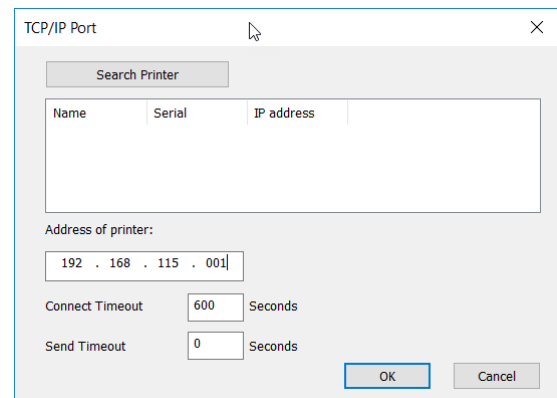
There are now two options to add the port. You may either:

Click on *Search Printer* to auto-detect the printer in the network, then select the appropriate one from the list.

**Or**

Enter the IP address into the respective field at the bottom.

Connect and Send timeout can be left at their default values in most cases.

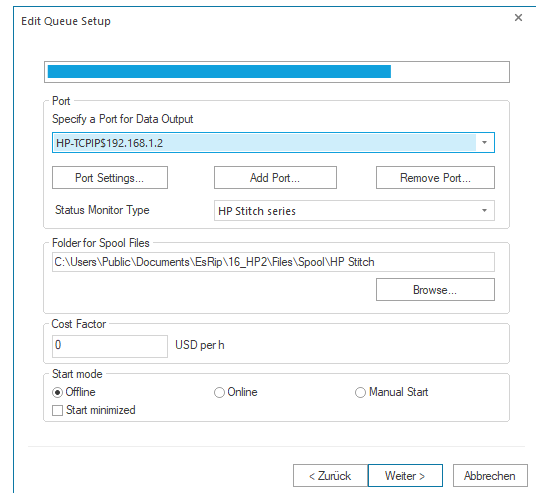


When you are done, click *Ok* to confirm and get to the Edit Queue Setup window. In *Port*, you'll find the printer port we just created already preselected.



The Edit Queue Setup dialog configures up the PrintClient, a waiting queue to manage print jobs.

By default, the folder for temporary spool files will be created in the *User Data* folder, but you may of course customize the folder, though it is recommended to make sure there is enough hddisk space available at the selected location for the spool files, as they may reach several GB for large print jobs.

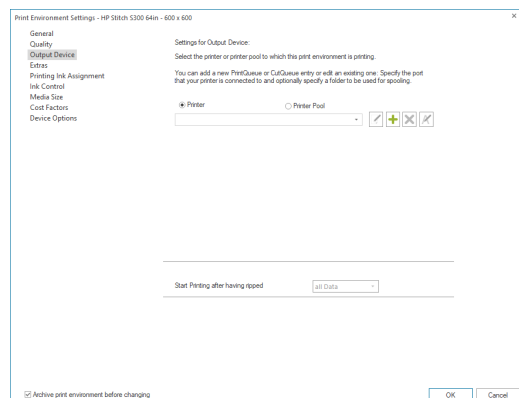
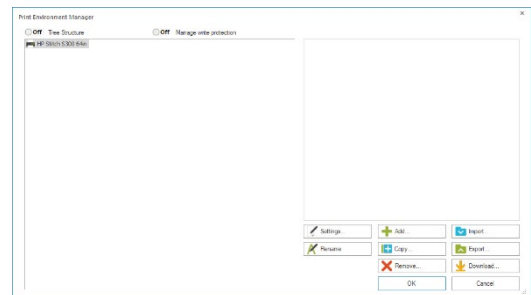



Confirm with Ok and specify a name for your PrintClient, confirm the selection, and finally enter a name for your newly created Print Environment to complete the initial configuration.

## Configuring Print Environment with *Import & Download*

After you have imported or downloaded your initial Print Environment through the respective button, we will need to configure the printer port so we can send data to the printer.

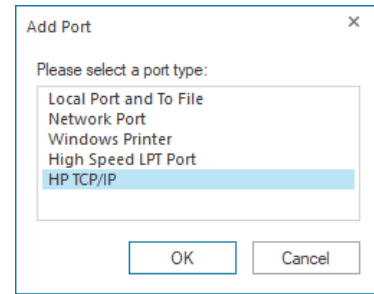
To do this, select the Print Environment you added in the *Print Environments* dialog and click the *Settings* button.



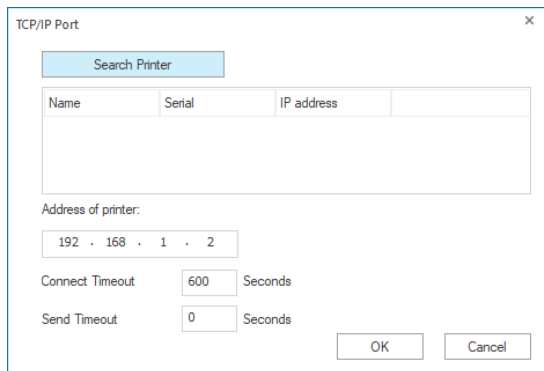
Navigate to *Output Device*. As we have not yet defined a port, the dropdown list of PrintClients will be empty. Click on the  Icon to add a PrintClient and define the printer port.



In *Add Port*, select the port type **HP TCP/IP** and confirm with *Ok* to continue with the port configuration.



There are now two options to add the port. You may either:



Click on *Search Printer* to auto-detect the printer in the network, then select the appropriate one from the list.

**Or**

Enter the IP address into the respective field at the bottom.

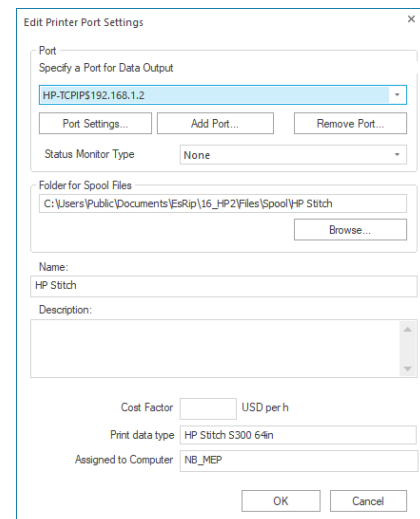
Connect and Send timeout can be left at their default values in most cases.

When you are done, click *Ok* to continue.

The next dialog sets up the PrintClient, a waiting queue to manage print jobs.

By default, the folder for temporary spool files will be created in the User Data folder, but you may of course customize the folder, though it is recommended to make sure there is enough harddisk space available at the selected location for the spool files, as they may reach several GB for large print jobs.

When you are happy with the configuration, confirm with *Ok*. Then confirm the Print Environment settings dialog with *Ok*.




This completes the Print Environment and port setup and brings you to the main RIP interface, called the JobComposer.

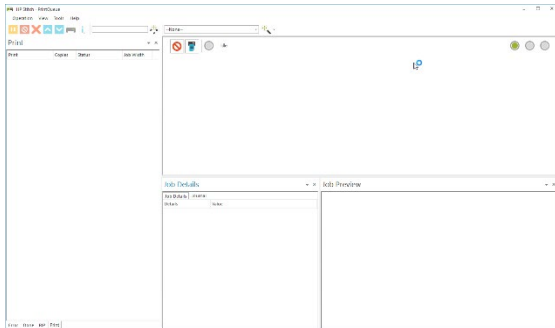
At first launch, the JobComposer will show the *Awareness Screen*, highlighting the HP Color Tools features. When you are ready, close the dialog by confirming with *Ok*.





## First Print


To print your first job, first open the PrintClient we configured earlier by clicking on the PrintClient Icon in the toolbar. Note that clicking the PrintClient icon  will always open the PrintClient set in the currently selected Print Environment.



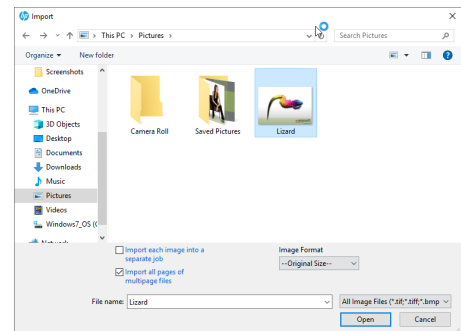
When the PrintClient opens, set it to Online by clicking on the first of the 3 dots at the top right so it turns green.

When set to Online, the PrintClient will automatically send all data to the printer as soon as it is ready.

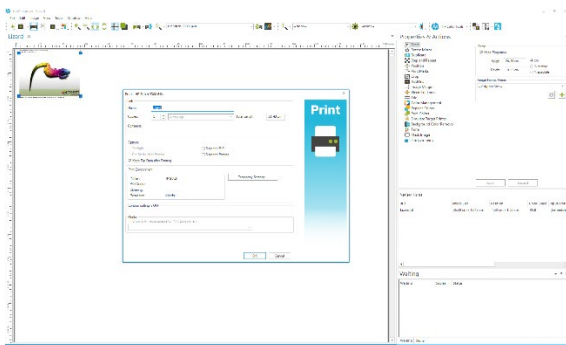
When set to Offline, it will not send any data to the printer, but instead prepare the raster data and place it in the waiting queue until the PrintClient is set to Online.


Go back to the JobComposer and import an image file by clicking the Import button .

Then navigate to your image file, select it and click Open.



Once the image is imported, you can make further adjustments to it in the properties bar to the right like scaling, rotating etc.



When you are satisfied, make sure the printer is ready, then click the *Print* Icon . Double check the copies and settings in the Print Dialog, then confirm with Ok to send your job to the printer.

You can now follow the progress of your Job in the PrintClient window as well as see Job Details, manage your Job queue, change priorities, abort jobs, etc.